

CASE STUDY:

Native American Fiber Program

Regenerative Agriculture Foundation Founded in 2019

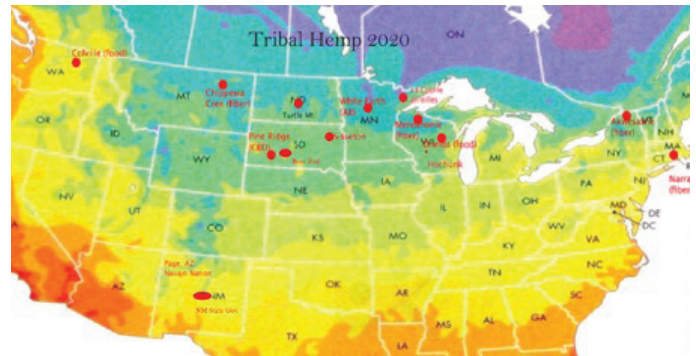
NAFP DIRECTOR: Fred Briones | ONEIDA NATION: Ernie Stevens | MENOMINEE NATION: Marcus Grignon | TURTLE MTN: Sheldon Thomas
NDSU Center of Bioplastics and Biocomposites (CB2)

ABOUT NAFP

The purpose of the Native American Fiber Program is to support communities and practitioners who still maintain place-based fiber practices, as well as support the production of fiber in tribal communities utilizing regenerative agriculture practices. Its mission is to perpetuate Indigenous fiber knowledge, arts, and economic opportunities.

MAIN BARRIERS OR NEEDS

The barriers include inclusion of traditional ecological knowledge, access to capital, and laboratory test results for hemp auto parts and sustainable building materials.



IMPACT AREAS



Waste Reduction



Carbon Sequestration



Economic Development/
Job Creation



Equity and Justice/
Indigenous Sovereignty

The leadership at the NAFP is focused on developing a hemp industry that would serve both Indian Country and nation-wide product markets, with a priority on spiritual healing in Indian Country. The program is currently creating an entire supply chain within Indian Country that protects the environment and provides multi layered job opportunities while improving capital infrastructure at Native CDFI's.

CURRENT CAPITAL STACK A/O INVESTMENT TO DATE

TYPE AND MAGNITUDE OF INVESTMENT SOUGHT

REVENUE MODEL & PROJECTED PROFITABILITY TIMELINE

KEY RISKS

In 2019, the NAFP was first funded by the WindRose Fund, then fully added into the Regenerative Agriculture Foundation. In 2020, the NAFP made available 200 acres for basket weavers and raised over **\$50,000** for both traditional and hemp fiber projects.

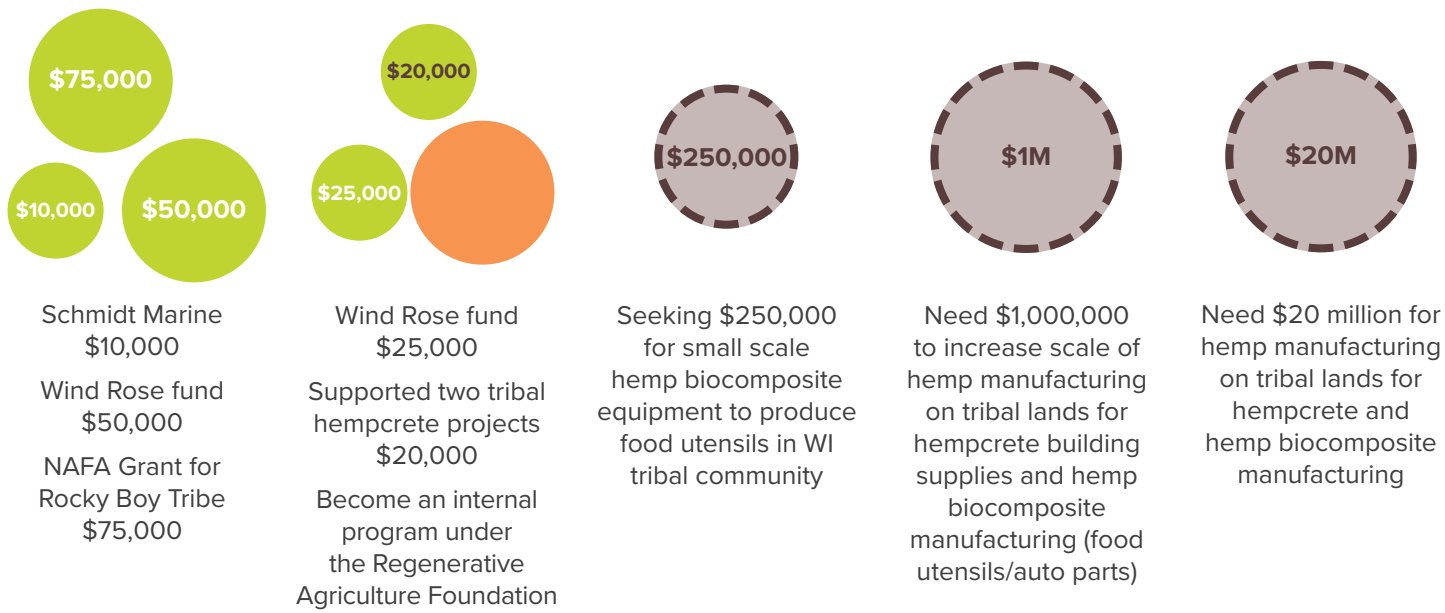
Seeking **\$250,000** for small scale hemp biocomposite equipment to produce food utensils in an WI tribal community.

With the NAFP's membership at CB2, we are networking with several large U.S. corporations for product development and test rating approval. In the year 2025, the program forecasts tribal hemp industrial manufacturing supported by Native CFDI's.

Lack of hemp fiber production experience combined with undetermined CB2 hemp auto parts research results.

INTEGRATED CAPITAL PATHWAY: NAFP

2019 ————— 2020 ————— 2021 ————— 2022 ————— 2025



TYPES OF CAPITAL



Adapted from and used by permission of RSF Social Finance